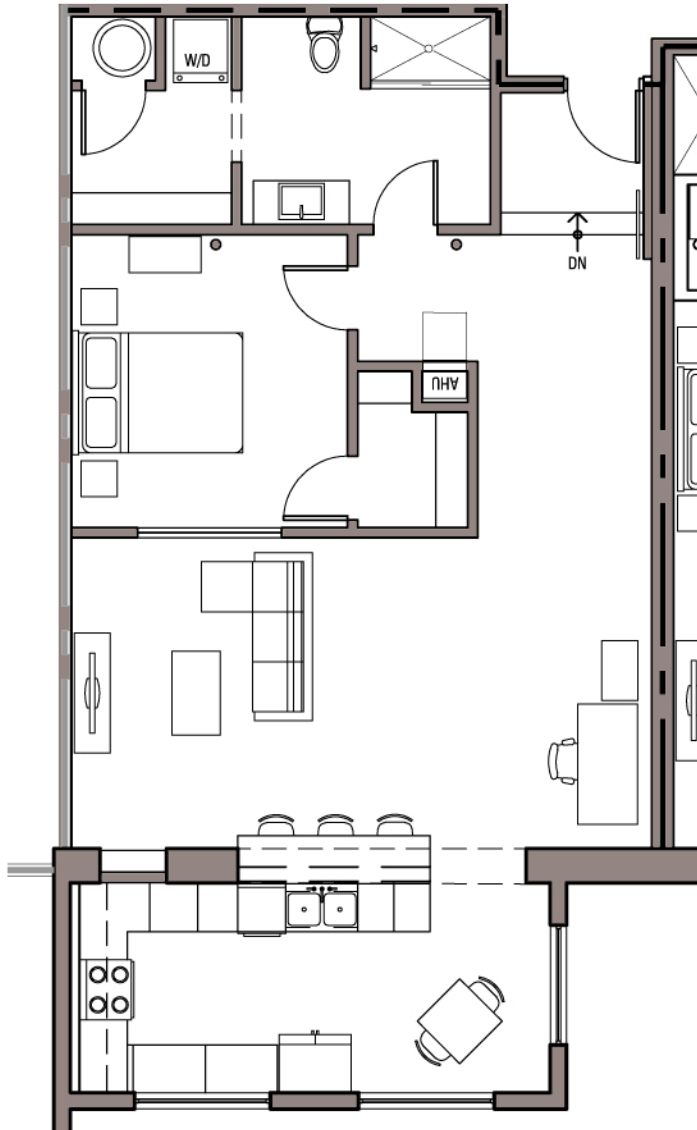


# LOFTS

AT ROCKY MOUNT MILLS



## TYPE P APARTMENT

1 BED | 1 BATH  
1030 SQ FT

### FEATURES

#### HISTORIC BUILDING

- Exposed Brick
- Historic Beams & Columns
- Expansive Windows
- Hardwood Floors

#### MODERN AMENITIES

- Granite Countertops
- Stainless Steel Appliances
- Washer | Dryer in Unit
- Ceramic Tiled Showers

\*Water and Electricity are included



SECOND FLOOR

PHONE NUMBER | 252.969.0909

**ROCKY  
MOUNT**  
-MILLS-

EMAIL | [LEASING@ROCKYMOUNTMILLS.COM](mailto:LEASING@ROCKYMOUNTMILLS.COM)