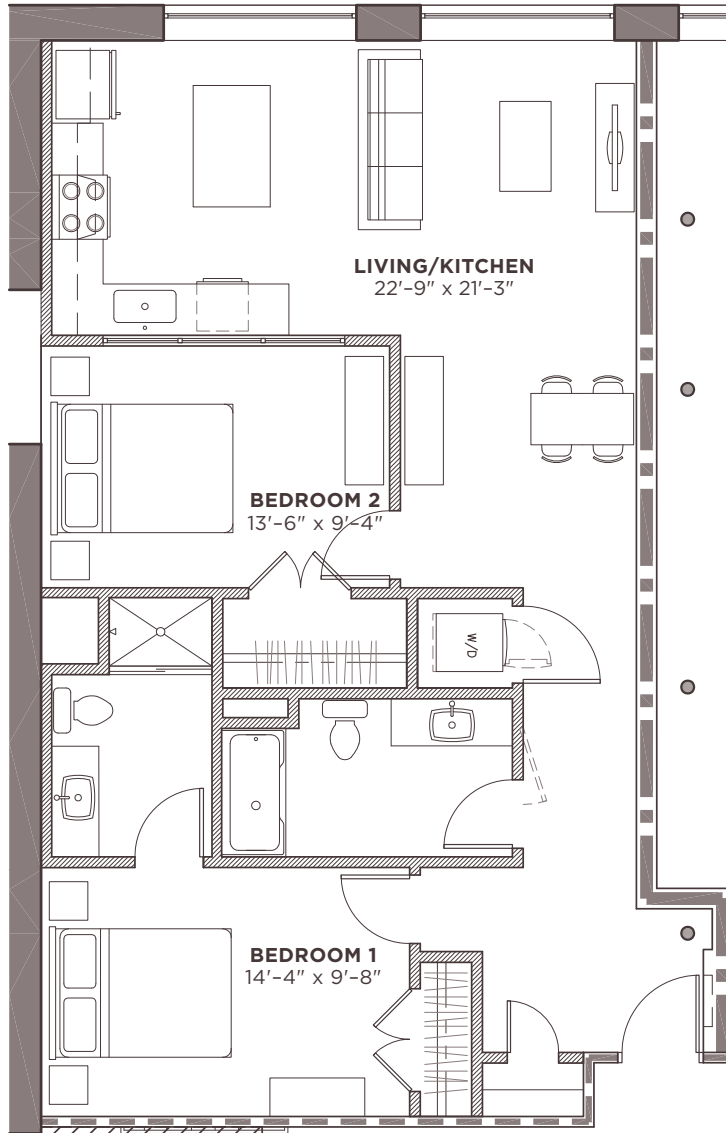


LOFTS

AT ROCKY MOUNT MILLS



TYPE E APARTMENT

2 BED | 1 BATH
975 SQ FT

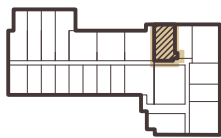
FEATURES

HISTORIC BUILDING

- Exposed Brick
- Historic Beams & Columns
- Hardwood Floors
- Vaulted Ceilings
- Expansive Windows

MODERN AMENITIES

- Recycled Glass Counters
- Stainless Steel Appliances
- Washer/ Dryer in Unit
- Ceramic Tiled Bathrooms



1ST, 2ND
& GROUND
FLOORS

PHONE NUMBER | 252.969.0909

**ROCKY
MOUNT**
=MILLS=

EMAIL | LEASING@ROCKYMOUNTMILLS.COM